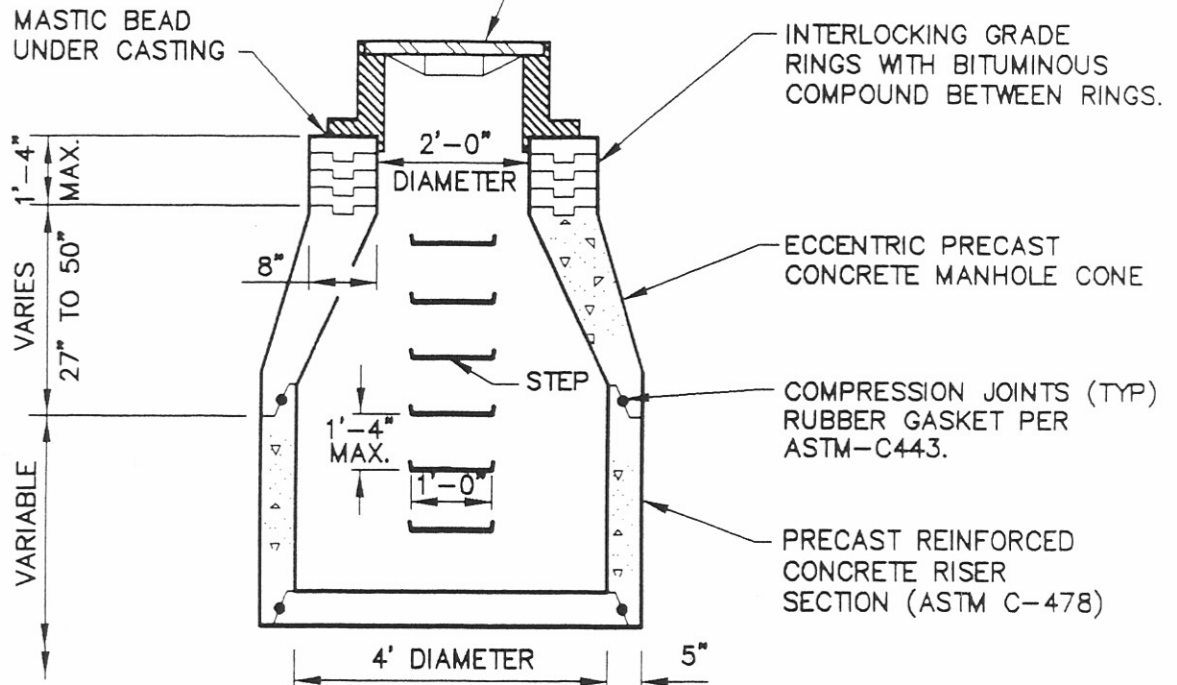


NEENAH R-1772-C OR EAST JORDAN 1022-2  
 MANHOLE FRAME AND SOLID COVER WITH  
 WORDS "STORM SEWER" OR "SANITARY SEWER"  
 AS APPROPRIATE CAST IN RAISED LETTERS.



NOTES:

1. FOR MANHOLE BASES SEE SD-120 OR SD-121.
2. STEPS TO BE 1" SQUARE ALUMINUM OR MA INDUSTRIES #PSI-PF.
3. IN FLOOD PRONE AREAS, USE WATER TIGHT SOLID MANHOLE COVER NEENAH R-1915-H, OR EAST JORDAN #1600WT

<p>CITY OF NEW PHILADELPHIA</p>	<p>STANDARD          CONSTRUCTION          DRAWING NO.  <b>SD-119</b>          REV. 08-00</p>
<p>PRECAST CONCRETE MANHOLE DETAIL</p>	