

**Tuscarawas County Emergency Evacuation Plan  
For  
Dover Dam**

**TUSCARAWAS COUNTY  
EMERGENCY EVACUATION PLAN  
FOR  
DOVER DAM**



**DOVER DAM**

**Prepared by:**

**Tuscarawas County Evacuation Planning Team  
&  
Tuscarawas County  
Homeland Security & Emergency Management Agency  
2295 Reiser Avenue SE  
New Philadelphia, Ohio 44663  
Patty Levengood, Director  
(330) 308-6670**

**June 2007**

**Tuscarawas County Emergency Evacuation Plan  
For  
Dover Dam**

**Preface**

The Tuscarawas County Homeland Security & Emergency Management Agency (TCHS & EMA) in conjunction with the Tuscarawas County Flood Evacuation Planning Team, initiated a program in November 2006 to develop evacuation plans for isolation areas up stream and affected areas downstream from the Dover Dam. This planning was initiated because of the January 5, 2005 Presidential Declared Disaster in Tuscarawas County due to heavy rainfall which caused downstream flooding and isolated areas in the Bolivar, Wilkshire and Zoar areas in Tuscarawas County.

This plan should be used in conjunction with the Tuscarawas County All Hazards Emergency Operations Plan.

**Tuscarawas County Emergency Evacuation Plan  
For  
Dover Dam**

**Table of Contents**

|  |    |
|--|----|
| <b>Basic Plan</b> .....                                  |    |
| I.    Purpose.....                                       | 4  |
| II.   Scope.....   | 4  |
| III.  Situation/Assumptions.....                         | 4  |
| IV.   Concept of Operations.....                         | 5  |
| V.    Area Security.....                                 | 10 |
| VI.   Search & Rescue .....                              | 10 |
| VII.  Recovery.....                                      | 11 |
| VIII. Responsibilities.....                              | 11 |
| IX.   Plan Development.....                              | 12 |
| X.    Supporting Plans & Guidelines.....                 | 12 |
| <br><b>Attachments</b> .....                             |    |
| Attachment 1 (Potential Evacuation Routes).....          | 13 |
| Attachment 2 (Potential Respite/Evacuation Centers)..... | 16 |
| Attachment 3 (Special Needs Facilities).....             | 18 |
| Attachment 4 (Emergency Notification Matrix).....        | 30 |
| Attachment 5 (Plan Distribution List).....               | 31 |
| Attachment 6 (Draft Press Releases).....                 | 34 |
| Attachment 7 (Planning Team Members).....                | 37 |
| Attachment 8 (List of Acronyms).....                     | 39 |
| Attachment 9 (Inundation Maps).....                      | 40 |

**Tuscarawas County Emergency Evacuation Plan  
For  
Dover Dam**

**I. PURPOSE:**

The purpose of this plan is to provide for the safety of the citizens of Tuscarawas County by establishing guidelines for warning, evacuating, and sheltering persons who would be endangered and/or isolated in the event of flooding upstream and/or downstream of Dover Dam. It also addresses similar emergency response actions which might be required in the event of flooding, caused by emergency releases from Dover Dam. The plan is designed to accomplish these functions with minimum confusion and maximum speed.

**II. SCOPE:**

- A. This plan is regional in application and pertains to the possible failure or high discharge from Dover Dam. It describes actions necessary to accomplish the warning, evacuation and sheltering of areas that would be affected in Tuscarawas County.
- B. This plan has been developed within the authority and guidance contained in the Tuscarawas County Emergency Operations Plan (EOP) which outlines responsibilities and response actions of County agencies in an emergency or disaster situation.
- C. This plan accentuates unique procedures necessary to respond to a dam emergency situation. The plan is designed to:
  - 1. Establish warning procedures.
  - 2. Outline evacuation procedures.
  - 3. Identify potential evacuation routes.
  - 4. Identify reception centers and shelters to be activated for the care of evacuees.
  - 5. Identify procedures for the security of the perimeter and the interior of the affected area during and after evacuation.
  - 6. Identify procedures for allowing evacuees to return to their homes.
  - 7. Assign specific functions and responsibilities to local emergency response agencies and other organizations.

**III. SITUATION & ASSUMPTIONS:**

- A. **Situation:** Dover Dam is located in Tuscarawas County, Ohio, in the Tuscarawas River, approximately three and one-half miles northeast of Dover, Ohio. Dover Dam is located approximately 62.6 miles above the

**Tuscarawas County Emergency Evacuation Plan  
For  
Dover Dam**

mouth of the Tuscarawas River and about 173.6 miles above the mouth of the Muskingum River. Dover Dam was completed in 1938, and is a concrete gravity structure with a maximum height of 83 feet above streambed. The top overall length is 824 feet at elevation 931. An uncontrolled ogee spillway is situated in the center channel section. The crest length is 338 feet at elevation 916. The outlet works, located at the base of the spillway section, consist of 18 gate-controlled conduits arranged in groups of six each at three different levels. To assure appropriate and prompt response to an emergency situation at any of the dams located in Tuscarawas County, the U.S. Army Corps of Engineers has developed a Dam Safety Emergency Action Plan which includes the following: Priority Notification Section, Emergency Action Plan, Emergency Notification Procedures, Identification of Potential Emergency Situations, Emergency Operations and Repairs, Inundation Maps and Guide to Flood Arrival Times at Downstream Communities, and General Project Data.

**B. Assumption:**

1. It is the responsibility of the U.S. Army Corps of Engineers to monitor the Dover Dam for potential risks.
2. It is the responsibility of the U.S. Army Corps of Engineers to remain in contact with the Tuscarawas County Homeland Security & Emergency Management Agency (TCHS & EMA) with updates on the status of the dam.
3. It is the responsibility of the U.S. Army Corps of Engineers to notify the TCHS & EMA of any threat to the community.
4. Both response and recovery operations will be hampered by blocked roads, damaged bridges or roads and downed trees.
5. In extreme conditions – Tuscarawas County will require State and Federal assistance.
6. Demand for resources will be critical.
7. Enhanced public awareness information such as handouts, media campaigns, evacuation routes and mapping information will be available.
8. Advanced preplanning is ongoing by all government entities, health care facilities, businesses, industries, and utilities in the inundation areas and is essential to maintain needed services during response and recovery operations.
9. It is assumed when citizens are asked to evacuate there will be a percentage who will not comply.

**IV. Concept of Operation:**

**A. General:**

1. To assure appropriate and prompt response to an emergency situation, the U.S. Army Corps of Engineers has classified potential emergency situation or conditions according to the relative urgency as follows:
  - A. Possible Dam Failure
  - B. Dam Failure

**Tuscarawas County Emergency Evacuation Plan  
For  
Dover Dam**

The Project Manager or designated representative of the US Army Corps of Engineers will, in the event of any emergency, take immediate action necessary to prevent dam failure and to prevent or minimize loss of life and property. He/She will initiate emergency notification procedures as outlined in the Dover Dam Emergency Action Plan. When the Corps of Engineers classifies the situation as a Possible Dover Dam failure, the National Weather Service will issue a Flash Flood Watch for potential dam failure. When the Corps of Engineers classifies the situation as a Dover Dam failure, the National Weather Service will issue a Flash Flood Warning for a dam failure.

2. Evacuations will be implemented on advice from the U. S. Army Corps of Engineers on progressive or instantaneous failure of the dam and/or increased flooding events. The ultimate responsibility for ordering an evacuation rests with local government.
3. By monitoring the progress of the evacuation, any impediments to the evacuation can be recognized and contingency options per individual organizations, agencies, groups Standard Operating Guidelines (SOG's) can be implemented.

**B. Authority:**

1. Evacuation Order
  - a. The Ohio Revised Code authorizes Township and Municipal Police, Fire Departments and the County Sheriff the power to protect lives and property of the citizens in their jurisdiction. This will be accomplished with decisions that will be made jointly in the County Emergency Operations Center.
  - b. The following positions have equal authority to order an evacuation during an emergency (Ohio General Attorney's Opinion #1532 - Nov. 1964)
    - 1.) Chief Elected Officials (CEO's)
    - 2.) County Sheriff
    - 3.) Municipal Chiefs of Police
    - 4.) Fire Chiefs
    - 5.) County EMA Director

**C. 24 Hour Warning Point:**

1. Tuscarawas County Sheriff's Office (330-339-2000)

**D. Notification & Communications:**

**Tuscarawas County Emergency Evacuation Plan  
For  
Dover Dam**

1. Corps of Engineers will initiate the warning notification to the Tuscarawas County Sheriff's Office Dispatch Center (TCSO) & TCHS & EMA.
2. TCSO Dispatch will issue notification to all appropriate response agencies (per county call out as indicated in county plan) upon notification by Corps of Engineers.
3. An Incident Communication Plan (identifying specific emergency response channels) will be developed by the Incident Commander for use during the response phase.
4. Direct communications will be established between the Incident Command Post and the Tuscarawas County Emergency Operations Center (EOC) by use of the Tuscarawas County-wide communications system.
5. Tusco Amateur Radio Club personnel may be assigned to appropriate Respite/Evacuation Centers and Mass Care Shelters, as a minimum for communication purposes with the Tuscarawas County EOC.

**E. Direction & Control:**

1. The Tuscarawas County EOC is located within the Sheriff's Office at 2295 Reiser Ave. SE, New Philadelphia, Ohio and/or an alternate Tuscarawas County EOC located within the County Annex Building at 125 E. High Avenue, New Philadelphia, Ohio will be activated to the appropriate level, and will coordinate all management of the emergency. A list of alternate EOC locations are on file at the EMA office.
2. To ensure effective coordination of the emergency response throughout the emergency, the senior fire officials of the impacted areas will act as Incident Commanders for their jurisdiction, unless this authority is transferred to another official.
3. All response operations will use the National Incident Management System which includes the Incident Command System to coordinate all response activities. The Incident Commander will establish an Incident Command Post for his area of responsibilities.
4. The On-Scene Incident Commander will coordinate operational decisions with the County EOC.
5. The County EOC Resource Coordinator in conjunction with the Executive Group in the County EOC will establish resource priorities.

**Tuscarawas County Emergency Evacuation Plan  
For  
Dover Dam**

6. The Tuscarawas County EOC will be the coordination point between all state agencies and local government operations and will establish communications with Ohio EMA and EMA offices of surrounding counties.
7. Each agency shall retain its authority during operations.

**F. Public Alert & Warning:**

1. Warning residents within the risk area will be initiated by the following means:
  - a. Reverse 911: Notification lists have been established and evacuation messages have been pre-recorded for dispatchers to activate. (Note: Notification lists are limited to published phone numbers and are dependent upon public phone service.)
  - b. Emergency Alert System (EAS) Broadcast: The County Sheriff or the County EMA Director can activate the EAS System which is located in the 911 dispatch center, to alert residents of imminent dangers. Draft messages can be viewed in Attachment 6.
  - c. National Oceanic and Atmospheric Administration (NOAA) Weather Radio: The National Weather Service will issue a Flash Flood Watch for potential dam failure when the Corps of Engineers classifies the situation as a Possible Dover Dam failure. The National Weather Service will issue a Flash Flood Warning for dam failure when the Corps of Engineers classifies the situation as a Dam Failure. These notifications will be tone alerted over NOAA Weather Radios and sent over EAS.
  - d. Mobile public address systems and sirens: First Responders using vehicle loud speakers and sirens may slowly drive roads in the affected area announcing the need to evacuate and indicating the best available routes for evacuation. Area fire departments will be responsible for writing a SOG for evacuating their jurisdictions.
  - e. Door to Door notification: Responders will systematically notify residents in the affected area. List of addresses notified will be kept and homes will be marked with a large X with tape on the front door to prevent duplication of efforts. Any resident that refuses to evacuate will be notified of the severity of the situation and required to supply name and phone number of a relative.

**G. Protective Actions: (County Commissioners, Mayors, Incident Commanders Township Trustees, Tuscarawas County Sheriff's Office)**



**Tuscarawas County Emergency Evacuation Plan  
For  
Dover Dam**

1. The impact of protective actions on the area has far reaching effects on the individuals being evacuated and those agencies supporting the process. The risk area would include not only flood prone areas, but also areas that would become isolated due to flooding and damage to area roads.
2. Potential evacuation routes have been identified on the basis of the best available information (See attachment 1). This information will be broadcast on the designated radio stations and distributed by all other means available.

**H. Public Information (Tuscarawas County PIO)**

1. The Tuscarawas County HS & EMA with assistance from the County Public Information Officer (PIO) and organizations knowledgeable in disaster preparedness education will be responsible for all pre-emergency public education and information.
2. The Tuscarawas County PIO, as designated by the County EMA Director, will provide all public information.
3. After the EOC is activated, elected officials of the affected jurisdictions will be encouraged to send a PIO for their jurisdiction to the Joint Public Information Center (JPIC) along with the County PIO to coordinate the dissemination of public information.
4. The local radio stations will broadcast immediate updates on the situation. (Designated stations include WJER (1450 AM), WTUZ (99.9 FM), and WBTC (1540AM). Information will also be available on additional radio stations when the EAS System has been activated.

**I. Traffic Control:** Tuscarawas County Sheriff's Office (SO), Ohio State Patrol (OSP), Local Police Departments, County Engineer, Ohio Department of Transportation (ODOT) and Township Trustees.

1. The County Sheriff's Office, OSP, and Local Police Departments will coordinate traffic control issues.
2. The County Engineer and ODOT will be responsible for traffic control signage.

**J. Evacuation of Special Needs Population:** (Nursing Homes, MRDD Facilities, and Special Care Individuals)

1. Nursing Homes and Special Needs facilities within the risk area should develop procedures to meet the needs of their individual facility. These plans should be coordinated with the county HS & EMA.

**Tuscarawas County Emergency Evacuation Plan  
For  
Dover Dam**

2. All resources requested for special needs will be requested through the County EOC.

**K. Mass Care:** (Red Cross, Salvation Army, Job & Family Services)

1. Respite/Evacuation Centers will be established in various locations. All evacuees will be instructed to check in at a respite/evacuation center even if they do not require sheltering assistance. Information left at the respite/evacuation center will:
  - a. Help determine residents safely evacuated.
  - b. Assist those residents that may require assistance with sheltering.
  - c. Aid in finding residents in the event that someone needs to get in touch with them.
2. Shelter assistance will be provided for those evacuees that may require assistance. A special needs area can be incorporated into an existing shelter, however that section will need to be staffed by the special needs facility. Red Cross Shelters have been identified in Attachment #2.

**V. Area Security:**

1. Security for the affected areas will be coordinated by County Sheriff's Office, OSP, and Local Police Departments. All additional personnel for Security will be coordinated through the EOC. (i.e.: Ohio National Guard)

**VI. Search & Rescue:** Fire, EMS, ODNR – Division of Watercraft, Dover FD-New Philadelphia FD Dive Team, Ohio Fire Chief's Plan, Army Corps. of Engineers, Civil Air Patrol, DMORT, Ohio Funeral Directors, Ohio National Guard)

- A. On scene search and rescue operations will be coordinated between the Incident Commander and the County EOC.
- B. Tuscarawas County EOC will request a fly-over conducting a search of the affected areas for stranded evacuees and identification of heavily damaged areas.
- C. Additional resources for search and rescue operations will be coordinated through the County EOC.
- D. Time required for the floodwaters to recede after flooding will vary. The County EOC will remain in close contact with the Army Corps of Engineers concerning the time frame for flooding to recede.

**Tuscarawas County Emergency Evacuation Plan  
For  
Dover Dam**

**VII. Recovery:**

- A. Damage Assessment:** (Tuscarawas County EMA Damage Assessment Team, County Engineer, Township Trustees, Mayors, ODOT, American Red Cross, Tuscarawas County Health Department, New Philadelphia Health Department, Tuscarawas County Citizen Corps Volunteers, Fire Departments, Law Enforcement).
1. Local government officials of the affected jurisdictions will conduct an initial damage assessment using all available resources (fire, law enforcement etc.) as soon as possible, following the disaster and report this information to the EOC. Early identification of problems affecting the population will enable the County EOC to make prompt and efficient decisions concerning availability of needed resources.
  2. The Tuscarawas County Engineer/Township Trustees/Public Works (i.e. ODOT) will determine the safety of all roads and bridges before any damage assessment teams may enter the impacted area.
- B. Return of Evacuees:**
1. The Incident Commander, County Engineer, ODOT, Township Trustees, Public Health, and Utility Providers will monitor the area in order to determine when the area is safe for return.
  2. The Incident Commander will coordinate the order to return with the EOC.
  3. Designated return routes and appropriate public information will be provided to evacuees through local media.
  4. The EOC will coordinate with utility providers for resumption of services once the residents have returned home.

**VIII. Responsibilities:**

- A. Specific responsibilities for emergency response and coordination are outlined in the Tuscarawas County Emergency Operations Plan (EOP).
- B. Each individual organization should establish specific policies and guidelines on how they will accomplish assigned responsibilities.

**Tuscarawas County Emergency Evacuation Plan  
For  
Dover Dam**

**IX. Plan Development and Maintenance:**

- A. TCHS & EMA is responsible for coordinating with the appropriate municipal, county and state-level organizations in order to make necessary changes and revisions to this plan. This plan is a living document and will undergo revisions as a result of feedback from After-Action Review Reports (AAR's) from actual incidents, disaster related exercises, testing and training.
- B. TCHS & EMA will forward plan revisions to all organizations on the distribution list (Attachment 5). It will be the responsibility of all organizations to update their copy of this plan once they receive an update.
- C. Organizations are responsible for sending changes (i.e. name, address and phone numbers or any other necessary changes) to TCHS & EMA for incorporation into this plan.
- D. All organizations and agencies are responsible for developing and maintaining departmental Standard Operating Guidelines (SOG's), mutual-aid agreements, personnel rosters (including 24 hour emergency notification telephone numbers), and equipment inventories.

**X. Supporting Plans & Guidelines:**

Tuscarawas County Emergency Operations Plan  
Tuscarawas County HS & EMA

Dover Dam Safety Emergency Action Plan  
US Army Corps. Of Engineers

National Weather Service – Pittsburgh Office

**Tuscarawas County Emergency Evacuation Plan  
For  
Dover Dam**

**Attachment 1**

**Potential Evacuation Routes**

**Page 1 of 3**

All evacuation routes are considered potential because each disaster is considered Incident Specific, therefore all routes may not be available. These potential routes are based on maps prepared for 36,000 cubic foot per second (cfs) from Dover Dam discharge.

AREA

EVACUATION ROUTES

Dover - North

CR 74 N to Strasburg  
SR 39 W to Sugarcreek  
SR 516 NW to Winfield/Dundee

Dover - South & NP Central

Tuscarawas Avenue N (to Dover N area)  
CR 24 S to Stonecreek I-77 Interchange  
E. High Ave. to US 250 E  
SR 39 E - (Possible route if not affected by Carroll County flooding which is incident specific)

NP - South

CR 24 S. (Oldtown Valley Rd.) to Williams Lake Rd. to Stonecreek I-77 Interchange

Dennison/Uhrichsville

US 250 E  
CR 66 to SR 39 E -(Possible route if not affected by Carroll County flooding which is incident specific)  
US 36 E to SR 416 N to CR 22 W to CR 21 N to Stonecreek or S to US 36 W  
(\*See Coshocton note below\*)

Tuscarawas

SR 416 S to US 36 E to US 250 E  
SR 416 S to CR 22 W to CR 21 N to Stonecreek or S to US 36 W

**Tuscarawas County Emergency Evacuation Plan**

**For**

**Dover Dam**

(\*\*See Coshocton note below\*\*)

**Attachment 1**

**Potential Evacuation Routes**

**Page 2 of 3**

Gnadenhutten

US 36 E to US 250 E

US 36 E to SR 416 N to CR 22 W to CR 21  
N to Stonecreek or S to US 36 W

(\*\*See Coshocton note below\*\*)

Port Washington

US 36 E to US 250 E

CR 23 to CR 21 N to Stonecreek or S to

US 36 W (\*\*See Coshocton note below\*\*)

Newcomerstown

US 36 W (\*\*See Coshocton note  
below\*\*)

CR 21 N

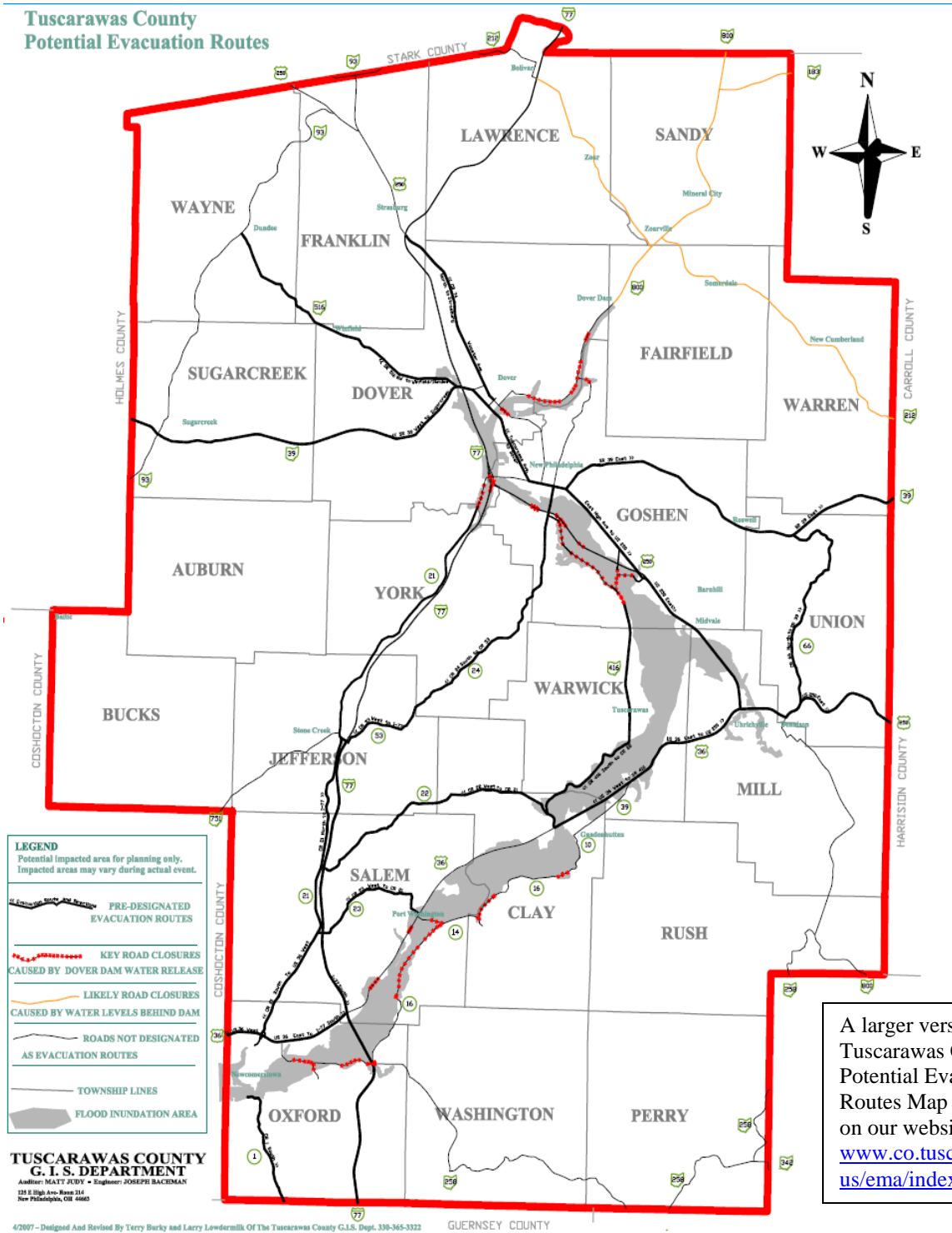
CR 1 S

I-77 S

Note: This list addresses concentrated population areas only. Since we cannot address every area that will be isolated, the assumption is that the rural population in the general area of the concentrated population areas will make their way to the concentrated areas and then follow one of the above routes.

\*\*US 36 W in Coshocton County may be open, but will be determined by Incident Specific rainfalls.\*\*

# Tuscarawas County Emergency Evacuation Plan For Dover Dam



A larger version of the Tuscarawas County Potential Evacuation Routes Map is available on our website:  
[www.co.tuscarawas.oh.us/ema/index.htm](http://www.co.tuscarawas.oh.us/ema/index.htm)

**Tuscarawas County Emergency Evacuation Plan  
For  
Dover Dam**

**Attachment 2**

**Potential Shelters**

**Page 1 of 2**

| Shaded Cells are Post Registration Centers and Shelter |      |                               |   |                  |
|--|------|-------------------------------|---|------------------|
| Dover North  |      |                               |   |                  |
| Shelter Name   | Gen. | Cap.                          | Address   | City             |
| Union Hill United Church                               |      | 25                            | 7877 Union Hill Rd NW   | Sugarcreek       |
| Shanesville Lutheran Church                            |      | 25                            | Corner of St Rt 39 & St Rt 93   | Sugarcreek       |
| Garaway Local Schools High and Middle Schools          |      | 75                            | 146 Dover Rd  | Sugarcreek       |
| First Mennonite Church                                 |      | 25                            | 113 Main St   | Sugarcreek       |
| Strasburg-Franklin Local Schools                       |      | 75                            | 140 North Bodmer Ave  | Strasburg        |
| First Evangelical Lutheran Church                      |      | 25                            | 204 Eighth St SW  | Strasburg        |
| Dover South/NP Central                                 |      |                               |   |                  |
| First United Church of Christ                          |      | 25                            | 201 Fair Ave NW   | New Philadelphia |
| Broadway United Methodist                              |      | 25                            | 120 Church Ave SE   | New Philadelphia |
| Schoenbrunn Moravian Church                            |      | 25                            | 2200 East High Ave  | New Philadelphia |
| Jerusalem Church                                       |      | 25                            | 1417 Stone Creek Rd SW  | New Philadelphia |
| All New Phila. Elementary Schools (Gymnasiums)         |      | 75 per school<br>Total<br>450 | Central Elem.: 145 Ray Ave., East Elem.: 470 Fair Ave. N.E, South Elem.: 132 Providence Ave S.W, Tuscarawas Ave. Elem.: 935 Tusc Ave N.W, West Elem.: 232 Tusc Ave N.W, and York Elem.: 938 Stone Creek RD SW | New Philadelphia |
| Welty Middle School (Multi-Purpose Room)               |      | 75                            | 315 Fourth Street NW  | New Philadelphia |
| New Phila High School (Gym)                            |      | 75                            | 315 Fourth Street NW  | New Philadelphia |
| American Red Cross                                     |      |                               | 1451 4 <sup>th</sup> St NW  | New Philadelphia |



**Tuscarawas County Emergency Evacuation Plan  
For  
Dover Dam**

**Attachment 2**

**Potential Shelters**

**Page 2 of 2**

| <b>Dennison/Uhrichsville</b>                       |   |      |                            |                 |
|--|---|------|----------------------------|-----------------|
| Roxford United Methodist Church Family Life Center |   | 25   | 661 Roxford Church Road SE | Dennison        |
| Claymont High School                               | X | 75   | 4205 Indian Hill RD        | Uhrichsville    |
| <b>Gnadenhutten</b>                                |   |      |                            |                 |
| Gnadenhutten Moravian Church                       |   | 25   | 145 South Walnut           | Gnadenhutten    |
| <b>Port Washington</b>                             |   |      |                            |                 |
| St Paul's Church                                   |   | 25   | 114 N High St              | Port Washington |
| <b>Newcomerstown</b>                               |   |      |                            |                 |
| St. Francis De Sales Church                        |   | 25   | 440 River St               | Newcomerstown   |
| Newcomerstown West School                          |   | 75   | 517 S. Beaver St           | Newcomerstown   |
| First Presbyterian Church                          |   | 25   | 205 Canal St               | Newcomerstown   |
| Newcomerstown Middle School                        |   | 75   | 659 S. Beaver St           | Newcomerstown   |
| Newcomerstown High School                          |   | 75   | 659 S. Beaver St           | Newcomerstown   |
| Elementary East Elementary School                  |   | 75   | 137 S. College St          | Newcomerstown   |
| <b>Stark County Shelters</b>                       |   |      |                            |                 |
| Fairless Middle & High School                      |   | 280  | 11885 Navarre Road         | Navarre         |
| Northwood Elementary                               |   | 120  | 1500 School Ave. NE        | North Canton    |
| East Canton High School                            |   | 250  | 310 Browning               | Canton          |
| Estimated total shelter Population                 |   | 2100 |                            |                 |

**Tuscarawas County Emergency Evacuation Plan  
For  
Dover Dam**

Attachment 3

Page 1 of 12

**Special Needs Facilities**

| <b>Nursing Homes &amp; Nursing Care Communities:</b>    |                  |  | <b>Phone Numbers</b>         |
|---|------------------|--|------------------------------|
| Amberwood Manor   | 36<br>Residents  | 245 South Broadway<br>New Philadelphia, OH 44663   | 330 339-2151                 |
| Beacon Point Rehab<br>Center                            | 62<br>Residents  | 5166 Spanson Dr. SE Uhrichsville<br><a href="http://www.beacon-pointe.net/">http://www.beacon-pointe.net/</a>  | 740-922-2208                 |
| Country Club<br>Retirement Campus                       | 65<br>Residents  | 860 E Iron Ave. Ext Dover<br><a href="http://www.countryclubretirementcampus.com">www.countryclubretirementcampus.com</a>  | 330-343-5568                 |
| Hennis Care &<br>Assisted Living Centre<br>of Bolivar   | 97<br>Residents  | 300 Yant Street Bolivar<br><a href="http://www.henniscarecentre.com">http://www.henniscarecentre.com</a>   | 330-874-9999                 |
| Hennis Care Centre                                      | 136<br>Residents | 1720 Cross Street Dover<br>1720 Cross Street Dover   | 330-343-6661<br>330-364-8849 |
| New Dawn Retirement<br>Community                        | 98<br>Residents  | 865 E Iron Ave. Dover<br><a href="http://www.new-dawn.net">http://www.new-dawn.net</a>   | 330-343-5521                 |
| Park Village Health<br>Care Center                      | 95<br>Residents  | 1525 Crater Ave. Dover   | 330-364-4436                 |
| **Riverside Manor<br>Nursing &<br>Rehabilitation Center | 82<br>Residents  | 1100 E State Rd. Newcomerstown   | 740-498-5165                 |
| Schoenbrunn<br>Healthcare                               | 94<br>Residents  | 2594 East High Ave. New<br>Philadelphia<br><a href="http://www.schoenbrunnhealthcare.com">www.schoenbrunnhealthcare.com</a>  | 330-339-3595                 |
| Walnut Hills Nursing<br>Home                            |                  | 4748 Olde Pump Walnut Creek  | 330-852-2457                 |
| Walnut Hills Assisted<br>Living                         |                  | 2708 Olde Pump St. Walnut Creek<br><a href="http://www.walnuthillsliving.com/index.htm">http://www.walnuthillsliving.com/<br/>index.htm</a>                              | 330-893-3200                 |
| Lanning House   |                  | 228 Grant St. Dennison Ohio<br><a href="http://www.occh.org/projects/project_display.cfm?ProjectID=110">www.occh.org/projects/project_display.<br/>cfm?ProjectID=110</a> | 614-396-3200                 |

\*\* Indicates Facilities potentially affected by Dam Failure

**Tuscarawas County Emergency Evacuation Plan  
For  
Dover Dam**

Attachment 3

Page 2 of 12

**Special Needs Facilities Continued**

|  |   |              |
|--|---|--------------|
| <b>MRDD:</b>   |   |              |
| **Starlight School & Transportation                  | 518 Church Ave. SW New Philadelphia                 | 330-399-3577 |
| **Adult Services                                     | 638 Commercial Ave. New Philadelphia                | 330-339-3578 |
| The Residential Program/<br>Office of Superintendent | 1260 Monroe St. NW P.O. Box6190<br>New Philadelphia | 330-339-5145 |
| Business Operations                                  | 223 Fairview Ave. NW New<br>Philadelphia            | 330-339-5145 |

|  |                     |                     |
|--|---------------------|---------------------|
| <b>MRDD Staff Directory</b>                          |                     |                     |
| Superintendent                                       | Natalie Lupi        | 330-339-9779        |
| Adult Services Director                              | Cassie Elvin        | 330-339-9669        |
| School Principal                                     | Sue Kloc            | 330-339-9559        |
| Director of Business Operations                      | Trevor Buehler      | 330-339-9772        |
| Service Facilitation Manager                         | Bob Mathews         | 330-308-7175        |
| Administrative Assistant to the Superintendent       | Lisa Sidoti         | 330-339-9757        |
| Human Resources Coordinator                          | Patrick Silva       | 330-339-9753        |
| Medical/Residential Manager                          | John Saylor         | 330-339-9756        |
| Information Technology Coordinator                   | Keith Stoneman      | 330-339-9668        |
| Reporting Systems Manager                            | Deb Ireland         | 330-339-9769        |
| Community Relations/ Special Projects<br>Coordinator | Erin Jones          | 330-339-9573        |
| <b>Transportation Manager</b>                        | <b>David Duncan</b> | <b>330-339-8714</b> |
|  |                     |                     |
|  |                     |                     |
|  |                     |                     |
|  |                     |                     |
|  |                     |                     |

**MRDD Board Members:**

- Craig Barnett- President
- Jim Cugliari - Vice President
- Kendra Burger- Recording Secretary
- Barbara Ernest-
- Tricia Herzig-McKinnon
- Robert Preston-
- Penny Stull-

\*\* Indicates Facilities potentially affected by Dam Failure

**Tuscarawas County Emergency Evacuation Plan  
For  
Dover Dam**

Attachment 3

Page 3 of 12

**Special Needs Facilities Continued**

| <b>Visiting Nurse Services:</b>   |   |                                |
|-----------------------------------|---|--------------------------------|
| A Better Home Health Care         | 1235 4 <sup>th</sup> St. New Philadelphia         | 1-800-322-1575<br>330-364-3399 |
| A Better Home Health Care         | 1130 N. Wooster Ave. Strasburg                    | 330-878-3399                   |
| All American Health Care          | 255 2 <sup>nd</sup> St. NE Ste B New Philadelphia | 330-365-2196                   |
| Cambridge Home Health Care        | 525 West High Ave. New Philadelphia               | 330-339-5079                   |
| **Union Hospital Home Health Care | 300 Medical Park Dr. Dover                        | 330-343-6909                   |
|                                   |   |                                |
|                                   |   |                                |
|                                   |   |                                |

| <b>Hospitals:</b>   |                                    |              |
|---|------------------------------------|--------------|
| **Union Hospital  | 659 Boulevard Dover                | 330-343-3311 |
| Twin City Hospital  | 819 N 1 <sup>st</sup> St. Dennison | 740-922-2800 |
|   |                                    |              |
| ** Indicates Facilities potentially affected by Dam Failure |                                    |              |

**Tuscarawas County Emergency Evacuation Plan  
For  
Dover Dam**

**Attachment 3**

**SPECIAL NEEDS FACILITIES CONTINUED**

**Page 4 of 12**

**TUSCARAWAS COUNTY DAY CARE FACILITIES**

| NAME  | ADDRESS | PHONE | AVERAGE<br>NO.<br>CHILDREN | SPECIAL NEEDS<br>CHILDREN IN<br>FAC. | EVACUATION<br>PLAN |
|---|---------|-------|----------------------------|--------------------------------------|--------------------|
| Intentionally Left Blank –<br>List on file at EMA |         |       |                            |                                      |                    |
|   |         |       |                            |                                      |                    |
|   |         |       |                            |                                      |                    |
|   |         |       |                            |                                      |                    |
|   |         |       |                            |                                      |                    |
|   |         |       |                            |                                      |                    |
|   |         |       |                            |                                      |                    |
|   |         |       |                            |                                      |                    |

**Tuscarawas County Emergency Evacuation Plan  
For  
Dover Dam**

Attachment 3 Special Needs Facilities Page 5 of 12

|   |  |  |  |  |  |
|---|--|--|--|--|--|
| Intentionally Left Blank –<br>List on file at EMA |  |  |  |  |  |
|   |  |  |  |  |  |
|   |  |  |  |  |  |
|   |  |  |  |  |  |
|   |  |  |  |  |  |
|   |  |  |  |  |  |
|   |  |  |  |  |  |
|   |  |  |  |  |  |
|   |  |  |  |  |  |
|   |  |  |  |  |  |
|   |  |  |  |  |  |
|   |  |  |  |  |  |
|   |  |  |  |  |  |

**Tuscarawas County Emergency Evacuation Plan  
For  
Dover Dam**

Attachment 3 Special Needs Facilities Page 6 of 12

|   |  |  |  |  |  |
|---|--|--|--|--|--|
| Intentionally Left Blank –<br>List on file at EMA |  |  |  |  |  |
|   |  |  |  |  |  |
|   |  |  |  |  |  |
|   |  |  |  |  |  |
|   |  |  |  |  |  |
|   |  |  |  |  |  |
|   |  |  |  |  |  |
|   |  |  |  |  |  |
|   |  |  |  |  |  |
|   |  |  |  |  |  |
|   |  |  |  |  |  |
|   |  |  |  |  |  |

**Tuscarawas County Emergency Evacuation Plan  
For  
Dover Dam**

Attachment 3 Special Needs Facilities Page 7 of 12

|   |  |  |  |  |  |
|---|--|--|--|--|--|
|   |  |  |  |  |  |
| Intentionally Left Blank –<br>List on file at EMA |  |  |  |  |  |
|   |  |  |  |  |  |
|   |  |  |  |  |  |
|   |  |  |  |  |  |
|   |  |  |  |  |  |
|   |  |  |  |  |  |
|   |  |  |  |  |  |
|   |  |  |  |  |  |
|   |  |  |  |  |  |
|   |  |  |  |  |  |
|   |  |  |  |  |  |
|   |  |  |  |  |  |
|   |  |  |  |  |  |
|   |  |  |  |  |  |
|   |  |  |  |  |  |







**Tuscarawas County Emergency Evacuation Plan  
For  
Dover Dam**

Attachment 3 Special Needs Facilities Page 10 of 12

|   |  |  |  |  |  |
|---|--|--|--|--|--|
| Intentionally Left Blank –<br>List on file at EMA |  |  |  |  |  |
|   |  |  |  |  |  |
|   |  |  |  |  |  |
|   |  |  |  |  |  |
|   |  |  |  |  |  |
|   |  |  |  |  |  |
|   |  |  |  |  |  |
|   |  |  |  |  |  |
|   |  |  |  |  |  |
|   |  |  |  |  |  |

**Tuscarawas County Emergency Evacuation Plan  
For  
Dover Dam**

Attachment 3 Special Needs Facilities Page 11 of 12

|   |  |  |  |  |  |
|---|--|--|--|--|--|
| Intentionally Left Blank –<br>List on file at EMA |  |  |  |  |  |
|   |  |  |  |  |  |
|   |  |  |  |  |  |
|   |  |  |  |  |  |
|   |  |  |  |  |  |

**Tuscarawas County Emergency Evacuation Plan  
For  
Dover Dam**

**Attachment 3**

**Special Needs Facilities Continued**

**Page 12 of 12**

**MRDD (Board of Mental Retardation & Developmental Disabilities)**

**RESIDENTIAL HOUSES WITH (APPROXIMATE NUMBER OF RESIDENTS)**

Starlight Enterprises Incorporated, Non-profit Board housing list

Lockport home (3)

East High home (4)

Ray home (3)

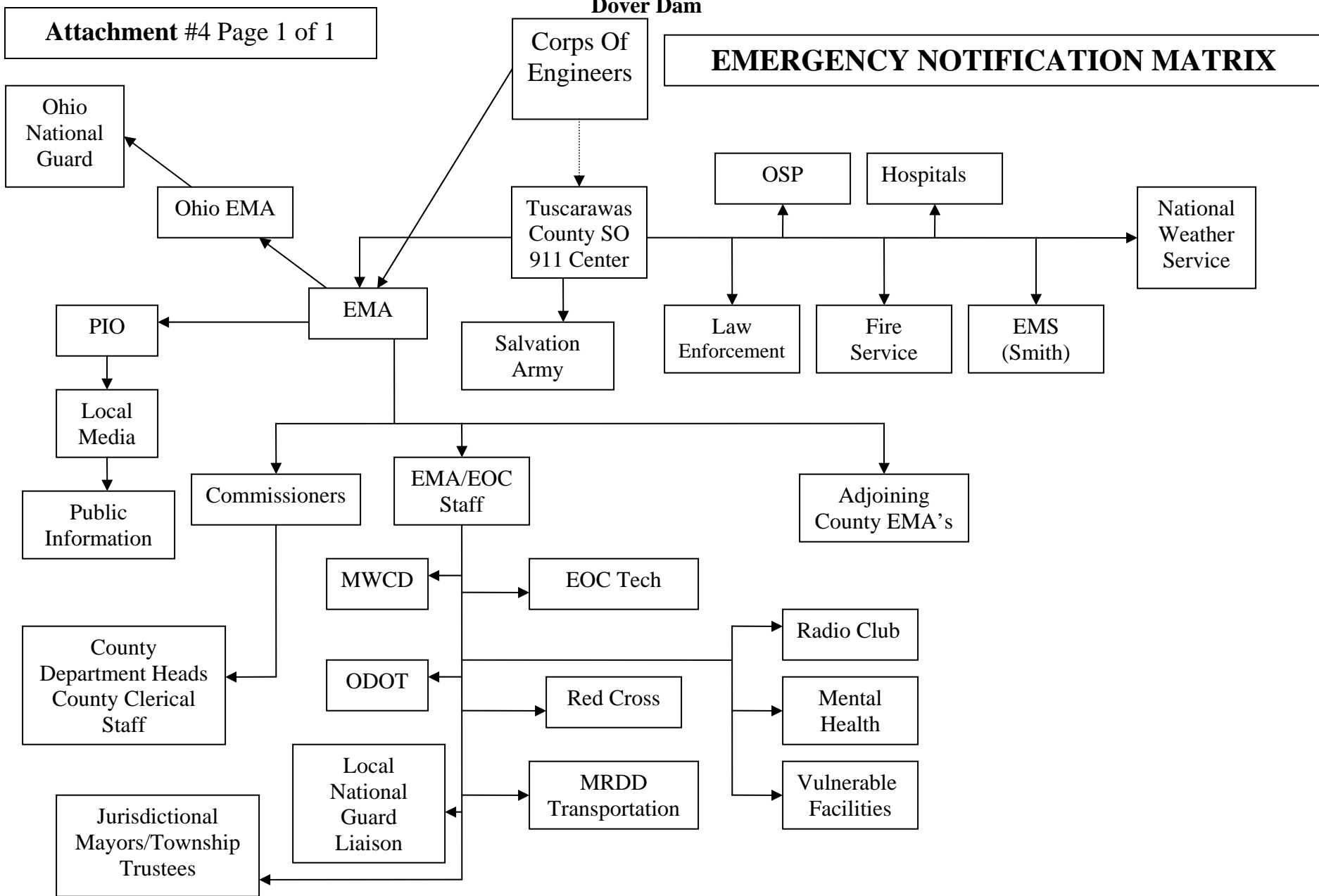
Cedar Home (4)

Lincoln home (2)

Iron home (3)

Front St home (4)

**Tuscarawas County Emergency Evacuation Plan  
For  
Dover Dam**



**Tuscarawas County Emergency Evacuation Plan  
For  
Dover Dam**

**Attachment 5 Tuscarawas County Plan Distribution List Page 1 of 3**

| <b>DEPARTMENT/AGENCY</b>                        | <b>DATE</b> | <b>ACKNOWLEDGMENT SIGNATURE</b> |
|---|-------------|---------------------------------|
| Board of County Commissioners                   |             |                                 |
| Homeland Security & Emergency Management Agency |             |                                 |
| County Sheriff's Office                         |             |                                 |
| County Engineer                                 |             |                                 |
| Public Information Officer                      |             |                                 |
| County Health Department                        |             |                                 |
| City Health Department                          |             |                                 |
| County Coroner                                  |             |                                 |
| Department of Job & Family Services             |             |                                 |
| Recycling & Litter Prevention                   |             |                                 |
| Soil & Water Conservation                       |             |                                 |
| OSU Extension Office                            |             |                                 |
| Ohio State Highway Patrol – Local Post          |             |                                 |
| ODOT- Local District                            |             |                                 |
| ODNR – Division of Watercraft                   |             |                                 |
| ODNR – Division of Parks & Recreation           |             |                                 |
| Corps of Engineers – Local Office               |             |                                 |
| National Weather Service - Pittsburgh           |             |                                 |
| MWCD – Muskingum Watershed                      |             |                                 |
| EMS – Smith Ambulance                           |             |                                 |
| Mental Health – ADAMS Board                     |             |                                 |
| American Red Cross                              |             |                                 |
| Salvation Army                                  |             |                                 |
| Carroll County EMA                              |             |                                 |
| Coshocton County EMA                            |             |                                 |
| Guernsey County EMA                             |             |                                 |
| Harrison County EMA                             |             |                                 |
| Holmes County EMA                               |             |                                 |
| Stark County EMA                                |             |                                 |
| Village of Baltic                               |             |                                 |
| Village of Barnhill                             |             |                                 |
| Village of Bolivar                              |             |                                 |
| Village of Dennison                             |             |                                 |
| City of Dover                                   |             |                                 |
| Village of Gnadenhutten                         |             |                                 |
| Village of Midvale                              |             |                                 |
| Village of Mineral City                         |             |                                 |
| Village of Newcomerstown                        |             |                                 |
| City of New Philadelphia                        |             |                                 |
| Village of Parrall                              |             |                                 |

**Tuscarawas County Emergency Evacuation Plan**

**Attachment 5 Continued**      **Page 2 of 3**

**For  
Dover Dam**

| <b>DEPARTMENT/AGENCY</b>            | <b>DATE</b> | <b>ACKNOWLEDGMENT SIGNATURE</b> |
|-------------------------------------|-------------|---------------------------------|
| Village of Port Washington          |             |                                 |
| Village of Roswell                  |             |                                 |
| Village of Stone Creek              |             |                                 |
| Village of Strasburg                |             |                                 |
| Village of Sugarcreek               |             |                                 |
| Village of Tuscarawas               |             |                                 |
| City of Uhrichsville                |             |                                 |
| Village of Zoar                     |             |                                 |
| Baltic FD                           |             |                                 |
| Bolivar FD                          |             |                                 |
| Delaware Valley Joint Fire District |             |                                 |
| Dennison FD                         |             |                                 |
| Dover FD                            |             |                                 |
| Fairfield Township FD               |             |                                 |
| Gnadenhutten FD                     |             |                                 |
| Midvale FD                          |             |                                 |
| Mineral City FD                     |             |                                 |
| NERS, Inc.                          |             |                                 |
| New Philadelphia FD                 |             |                                 |
| Rush Township FD                    |             |                                 |
| Zoar FD                             |             |                                 |
| Stone Creek FD                      |             |                                 |
| Strasburg FD                        |             |                                 |
| Sugarcreek FD                       |             |                                 |
| Tuscarawas-Warwick FD               |             |                                 |
| Uhrichsville FD                     |             |                                 |
| Wayne Township FD                   |             |                                 |
| York FD                             |             |                                 |
| Bolivar PD                          |             |                                 |
| Dennison PD                         |             |                                 |
| Dover PD                            |             |                                 |
| Gnadenhutten PD                     |             |                                 |
| Midvale PD                          |             |                                 |
| Newcomerstown PD                    |             |                                 |
| New Philadelphia PD                 |             |                                 |
| Port Washington PD                  |             |                                 |
| Strasburg PD                        |             |                                 |
| Sugarcreek PD                       |             |                                 |
| Tuscarawas PD                       |             |                                 |
| Uhrichsville PD                     |             |                                 |
| Ohio State Highway Patrol #79       |             |                                 |
| Baltic PD                           |             |                                 |
| Roswell PD                          |             |                                 |



**Tuscarawas County Emergency Evacuation Plan**

|                        |             |
|------------------------|-------------|
| Attachment 5 Continued | Page 3 of 3 |
|------------------------|-------------|

**For  
Dover Dam**

| <b>DEPARTMENT/AGENCY</b>                 | <b>DATE</b> | <b>ACKNOWLEDGMENT SIGNATURE</b> |
|--|-------------|---------------------------------|
| Barnhill PD                              |             |                                 |
| Swiss Valley Joint Ambulance District    |             |                                 |
| Mineral-Sandy EMS                        |             |                                 |
| Tri-County Ambulance                     |             |                                 |
| Smith Ambulance                          |             |                                 |
| Auburn Township                          |             |                                 |
| Bucks Township                           |             |                                 |
| Clay Township                            |             |                                 |
| Dover Township                           |             |                                 |
| Fairfield Township                       |             |                                 |
| Franklin Township                        |             |                                 |
| Goshen Township                          |             |                                 |
| Jefferson Township                       |             |                                 |
| Lawrence Township                        |             |                                 |
| Mill Township                            |             |                                 |
| Oxford Township                          |             |                                 |
| Perry Township                           |             |                                 |
| Rush Township                            |             |                                 |
| Salem Township                           |             |                                 |
| Sandy Township                           |             |                                 |
| Sugarcreek Township                      |             |                                 |
| Union Township                           |             |                                 |
| Warren Township                          |             |                                 |
| Warwick Township                         |             |                                 |
| Washington Township                      |             |                                 |
| Wayne Township                           |             |                                 |
| York Township                            |             |                                 |
| Buckeye Career Center                    |             |                                 |
| Claymont School District                 |             |                                 |
| Dover City Schools                       |             |                                 |
| Garaway Local School District            |             |                                 |
| Indian Valley Local School District      |             |                                 |
| Newcomerstown Exempted Village School    |             |                                 |
| Strasburg-Franklin Local School District |             |                                 |
| New Philadelphia City Schools            |             |                                 |
| Tuscarawas-Carroll-Harrison ESC          |             |                                 |
| Tuscarawas County MRDD                   |             |                                 |
| Tusky Valley Local School District       |             |                                 |
| Twin City Hospital                       |             |                                 |
| Union Hospital                           |             |                                 |

**Tuscarawas County Emergency Evacuation Plan  
For  
Dover Dam**

ATTACHMENT 6

**DRAFT NEWS RELEASE**

Page 1 of 3

**Tuscarawas County Homeland Security & Emergency Management Agency  
For Immediate Release**

**Date:** \_\_\_\_\_

**Contact: Patty Levengood, Director**

**(330) 308-6670**

[www.co.tuscarawas.oh.us/EMA/](http://www.co.tuscarawas.oh.us/EMA/)

**EVACUATION ORDER ISSUED FOR RESIDENCES NEAR DOVER DAM**

The Tuscarawas County Homeland Security and Emergency Management Agency reports that due to the significant precipitation at Dover Dam, an EVACUATION ORDER has been issued for the immediate Dover Dam area and for residents in the following locations: (Example: List locations who should evacuate) \_\_\_\_\_  
\_\_\_\_\_  
\_\_\_\_\_

Residents in the EVACUATION ORDER areas should evacuate their homes and business no later than: \_\_\_\_\_ (Date & Time).

County officials have recommended an EVACUATION WARNING for residents in the following areas: \_\_\_\_\_  
\_\_\_\_\_

Residents in the EVACUATION WARNING areas are not required to evacuate at this time, however should prepare and may be required to do so within the next 6-24 hours if conditions worsen.

Residents are urged to listen to local news stations and the Emergency Alert System for further evacuation information and instructions. Evacuees are asked to report to relocation centers in person located at \_\_\_\_\_ or by phone \_\_\_\_\_ when safely evacuated.

County and State agencies continue communications with US Army Corps of Engineer officials. The County Emergency Operations Center has been activated and will remain operational until the situation is resolved.

Additional information is available at: \_\_\_\_\_ **(Web Site Address)**

Local radio stations: WBTC 1540 AM, WJER 1450 AM and WTUZ 99.9 FM

**Tuscarawas County Emergency Evacuation Plan  
For  
Dover Dam**

ATTACHMENT 6

**DRAFT NEWS RELEASES**

Page 2 of 3

**Tuscarawas County Homeland Security & Emergency Management Agency  
For Immediate Release**

**Date:** \_\_\_\_\_

**Contact: Patty Levengood, Director  
(330) 308-6670**

[www.co.tuscarawas.oh.us/EMA/](http://www.co.tuscarawas.oh.us/EMA/)

**POSSIBLE DAM FAILURE AT DOVER DAM**

Officials at Dover Dam, approximately three miles northeast of Dover, Ohio, reported that a possible dam failure may occur if the pool continues to rise. The U.S. Army Corps of Engineers, county and state officials are on the scene, monitoring the situation.

The Tuscarawas County Homeland Security and Emergency Management Agency has activated the Emergency Operations Center. Ohio EMA has been notified that additional resources may be required if the situation worsens at the dam.

The Tuscarawas County Homeland Security and Emergency Management Agency reports that due to the significant precipitation at Dover Dam, an EVACUATION ORDER has been issued for the immediate Dover Dam area and for residents in the following locations: (Example: List locations who should evacuate) \_\_\_\_\_  
\_\_\_\_\_  
\_\_\_\_\_

Residents in the EVACUATION ORDER areas should evacuate their homes and business no later than: \_\_\_\_\_ (Date & Time).

County officials have recommended an EVACUATION WARNING for residents in the following areas: \_\_\_\_\_  
\_\_\_\_\_

Residents in the EVACUATION WARNING areas are not required to evacuate at this time, however should prepare and may be required to do so within the next 6-24 hours if conditions worsen.

Residents are urged to listen to local news stations and the Emergency Alert System for further evacuation information and instructions. Evacuees are asked to report to relocation centers in person located at \_\_\_\_\_ or by phone \_\_\_\_\_ when safely evacuated.

County and State agencies continue communications with US Army Corps of Engineer officials. The County Emergency Operations Center has been activated and will remain operational until the situation is resolved.

Additional information is available at: \_\_\_\_\_ **(Web Site Address)**

**Tuscarawas County Emergency Evacuation Plan  
For  
Dover Dam**

Local radio stations: WBTC 1540 AM, WJER 1450 AM and WTUZ 99.9 FM

ATTACHMENT 6                      **DRAFT NEWS RELEASES**                      Page 3 of 3

**Tuscarawas County Homeland Security & Emergency Management Agency  
For Immediate Release**

**Date:** \_\_\_\_\_

**Contact: Patty Levengood, Director  
(330) 308-6670**

[www.co.tuscarawas.oh.us/EMA/](http://www.co.tuscarawas.oh.us/EMA/)

**DAM FAILURE IN PROGRESS AT DOVER DAM**

This is an Emergency Broadcast:

Dover Dam has failed. All residents in low lying areas downstream of Dover Dam through Coshocton within 1 mile of the Tuscarawas River and tributaries need to seek high ground immediately.

Repeat above paragraph.

Addition information will follow. Stay tuned to radio stations, the EMA website, and television news stations for the most up to date information.

Additional information is available at: \_\_\_\_\_ **(Web Site Address)**

Local radio stations: WBTC 1540 AM, WJER 1450 AM and WTUZ 99.9 FM

**Tuscarawas County Emergency Evacuation Plan  
For  
Dover Dam**

ATTACHMENT 7

Page 1 of 2

**2007  
Dover Dam Evacuation Planning Team Members**

| Name                  | Organization                          |
|-----------------------|---------------------------------------|
| Andrew Elder          | Ohio EMA - Field Liaison              |
| Bill Drzal            | National Weather Service - Pittsburgh |
| Capt. George Bates    | Salvation Army                        |
| Chad Conrad           | Red Cross – Muskingum Lakes Chapter   |
| Chris Abbuhl          | Tuscarawas County Commissioner        |
| Darci Knack           | Tuscarawas County HS & EMA            |
| Darrin Lautenschleger | MWCD                                  |
| Dean Dietrich         | Red Cross – Muskingum Lakes Chapter   |
| Denis Chabot          | US Army Corps of Engineers            |
| Dick Bible            | ODOT                                  |
| Ed Bennett            | ODOT                                  |
| Gene Thornton         | Tusc. Co. Metropolitan Sewer District |
| James Spain           | ODOT                                  |
| Jamie Snyder          | New Philadelphia FD                   |
| Jeff Bonomo           | ODOT                                  |
| Jeff Urban            | New Philadelphia PD                   |
| Jim Seldenright       | Tuscarawas County Commissioner        |
| Joe Bachman           | Tuscarawas County Engineer            |
| John Rypien           | Twin City Water and Sewer             |
| Matt Judy             | Tuscarawas County Auditor             |

**Tuscarawas County Emergency Evacuation Plan  
For  
Dover Dam**

|                               |                                       |             |
|-------------------------------|---------------------------------------|-------------|
| <b>Attachment 7 Continued</b> |                                       | Page 2 of 2 |
| Kerry Metzger                 | Tuscarawas County Commissioner        |             |
| Larry Lowdermilk              | Tuscarawas County GIS                 |             |
| Jill Lengler                  | Tusc. Co. Office of Regional Planning |             |
| Patty Levengood               | Tuscarawas County HS & EMA            |             |
| Lt. Eric Escola               | Ohio State Patrol                     |             |
| Major Stephen Wickersham      | US Army Corps of Engineers            |             |
| Nick Krupa                    | US Army Corps of Engineers            |             |
| Renee Young                   | Ohio EMA - Field Liaison              |             |
| Ronald Johnson                | Dover PD                              |             |
| Rudi Blaser                   | Ohio EMA - Planner                    |             |
| Russ Volkert                  | Dover FD                              |             |
| Scott Tritt                   | MWCD                                  |             |
| Terry Burky                   | Tuscarawas County GIS                 |             |
| Walt Wilson                   | Tuscarawas County Sheriff             |             |

**Tuscarawas County Emergency Evacuation Plan  
For  
Dover Dam**

**Attachment #8**

**Page 1 of 1**

**List of Acronyms**

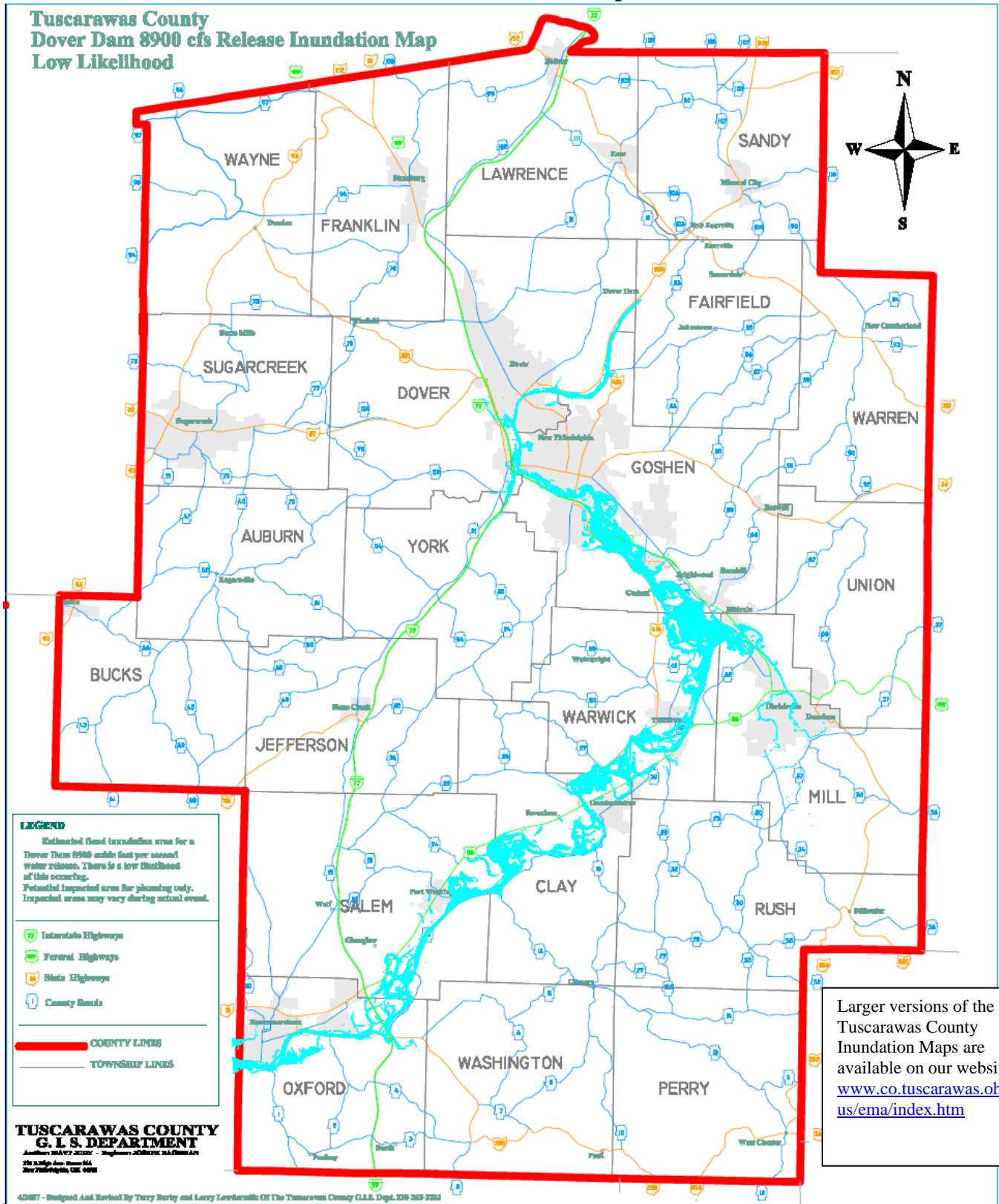
|         |  |
|---------|--|
| AAR -   | After Action Report                                      |
| CFS -   | Cubic Feet per Second                                    |
| DMORT - | Disaster Mortuary Operational Response Team              |
| EAS -   | Emergency Alert System                                   |
| EMA -   | Emergency Management Agency                              |
| EOC -   | Emergency Operations Center                              |
| EOP -   | Emergency Operations Plan                                |
| FD -    | Fire Department  |
| GIS -   | Geographic Information System                            |
| JPIC -  | Joint Public Information Center                          |
| MRDD -  | Board of Mental Retardation & Developmental Disabilities |
| MWCD -  | Muskingum Watershed Conservancy District                 |
| NOAA -  | National Oceanic and Atmospheric Administration          |
| ODNR -  | Ohio Department of Natural Resources                     |
| ODOT -  | Ohio Department of Transportation                        |
| OSP -   | Ohio State Highway Patrol                                |
| PIO -   | Public Information Officer                               |
| PD -    | Police Department  |
| SOG -   | Standard Operating Guidelines                            |
| SO -    | Sheriff's Office   |
| TCSO -  | Tuscarawas County Sheriff's Office                       |
| TCHS -  | Tuscarawas County Homeland Security                      |

**Tuscarawas County Emergency Evacuation Plan  
For  
Dover Dam**

**Attachment 9**

**Page 1 of 4**

**8900cfs release Inundation Map**



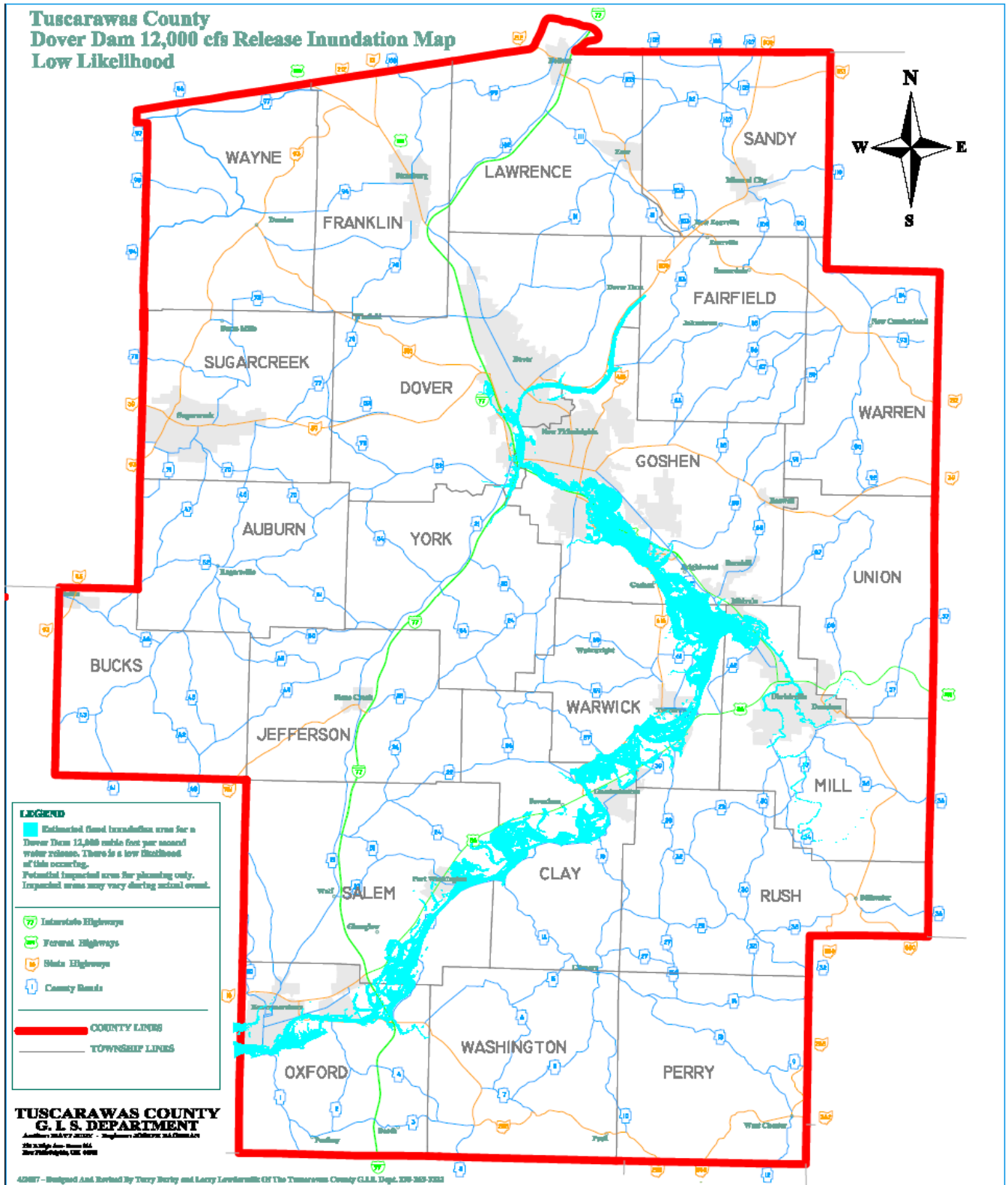


**Tuscarawas County Emergency Evacuation Plan  
For  
Dover Dam**

**Attachment 9**

**Page 2 of 4**

**12,000cfs release Inundation Map**

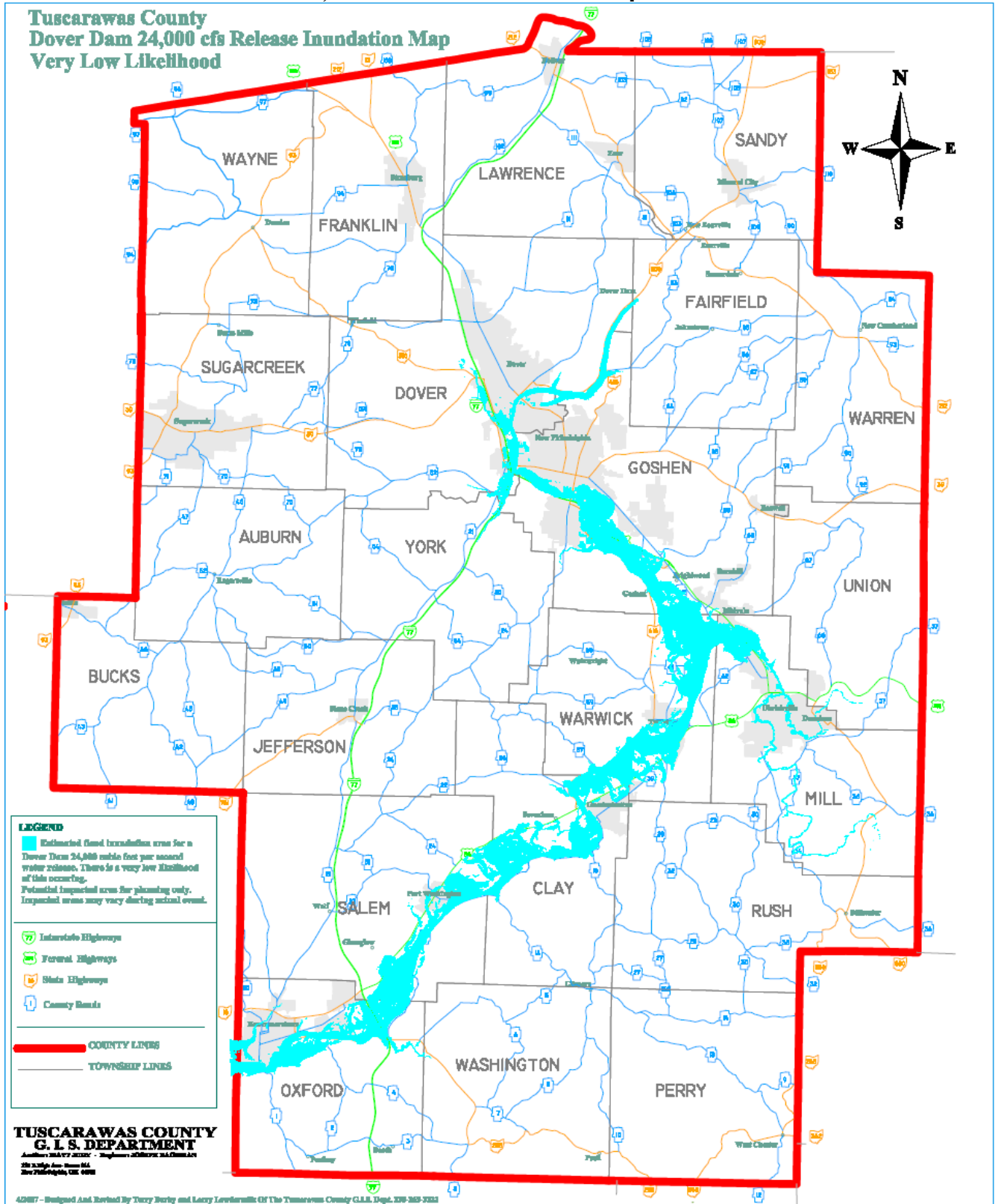


Tuscarawas County Emergency Evacuation Plan  
For  
Dover Dam

Attachment 9

Page 3 of 4

24,000cfs release Inundation Map



**Tuscarawas County Emergency Evacuation Plan  
For  
Dover Dam**

**Attachment 9**

**Page 4 of 4**

**36,000cfs release Inundation Map**

