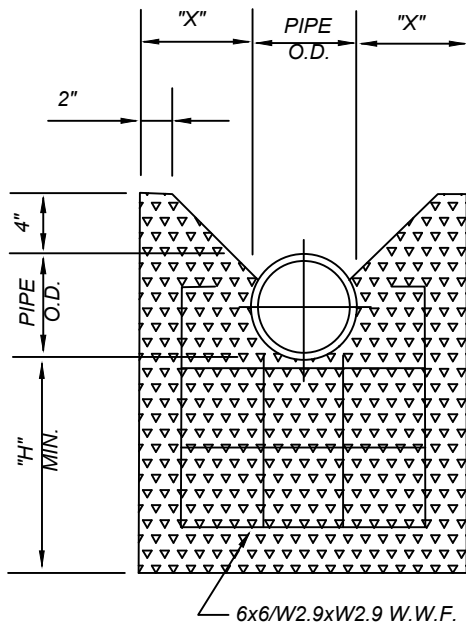


**PLAN VIEW**



**ANCHOR BLOCK  
FACE VIEW**

**THREADED RODS REQUIRED**

- 6" - USE 2 THREADED RODS
- 8" - USE 3 THREADED RODS
- 10" - USE 3 THREADED RODS
- 12" - USE 4 THREADED RODS

THREADED RODS TO BE EQUALLY SPACED IN CONCRETE DEADMAN 2" MIN. CLEARANCE TO CONC. FACE

PIPE O.D.	"X"	"H"
6"	8"	1' - 0"
8"	10"	1' - 3"
10"	12"	1' - 5"
12"	16"	1' - 9"

NOTE: MAXIMUM AMOUNT OF SURFACE AREA OF ANCHOR BLOCK FACE TO REST AGAINST UNDISTURBED SOIL AS POSSIBLE.

WRAP WATERMAIN IN PLASTIC WHERE IN CONTACT WITH CONCRETE ANCHOR BLOCK.

**CITY OF NEW PHILADELPHIA**

TYPICAL END OF WATERLINE DETAIL

STANDARD  
CONSTRUCTION  
DRAWING NO.

**SD-140**

5-2012